

**9,000 lb**



**SPECIFICATIONS**

**Suspension:**

Leaf Spring Suspension:

- Mounted 2" Wide Slipper Eye, Rubber Bushing
- Spring kits sold separately

Adjustable Spring Seat: For tracking alignment. (Optional)

Hanger Kit Options: See table below. (Sold Separately)

**Bolt Pattern Options:** • 8 on 6 1/2"

**Brake Options:** (Forward Self-Adjusting)

- 12 1/4" x 3 3/8" Electric
- 12 1/4" x 3 3/8" Hydraulic – Single or Duo-Servo, available with parking feature.
- ABS Equipped option for Hydraulic Brakes

**Spindles:** Uses 387A Inner, 25580 Outer Bearing

- Straight

**Tubing:**

- 4" OD .250 wall

**Lubrication:**

- Oil Bath

**Wheel Assemblies:** See Section E

**9,000 lb Axle Assemblies**  
**8 on 6 1/2"**

Electric w/o Springs 9K865E-NOSPR

Duo Servo Hydraulic w/o Springs 9K865HY-NOSPR

**ABS Equipped 8 on 6 1/2"**

Electric w/o Springs N/A

Duo Servo Hydraulic w/o Springs 9K865HABS-NOSPR

**Replacement Parts:**

**Hub/Drums:** See Page B-28 and B-29

**Brakes:** See Page C-15, C-16 (Electric), Page C-29, C-30 (Hydraulic)

**Axle Beams:** See Page B-2



**Standard Axle Configurations**

	Dual Wheel	Dual Wheel	Dual Wheel	Single Wheel
Track Width	76.00"	72.00"	68.00"	85.00"
Spring Center - Max.	54.00"	50.00"	46.00"	63.00"
Spring Center - Min.	45.00"	41.00"	37.00"	54.00"

**NOTE:** Dimensions are based on manufacturing tolerances only. Some tire and wheel combinations may create interference.

**9,000 lb. Axle Options**

Part No.	Ref. No.	Description
9KHYD-PARK	030400	HYDRAULIC BRAKES W/ PARK, ADD TO 9K HYDRAULIC BRAKE AXLE
XTRA-HF-9K	030410	EXTRA CHARGE (PER AXLE) FOR 9K AXLES OVER 80" HUB FACE
9KADJ-SEAT	030415	ADJ SPG SEATS ALLOWS CORRECTION OF AXLE SPACING, PREVENTS SIDE TRACKING
72-10-2MT9K	030418	2 EA, 72-10-2 SPRINGS MTD ON ABOVE 9K AXLES

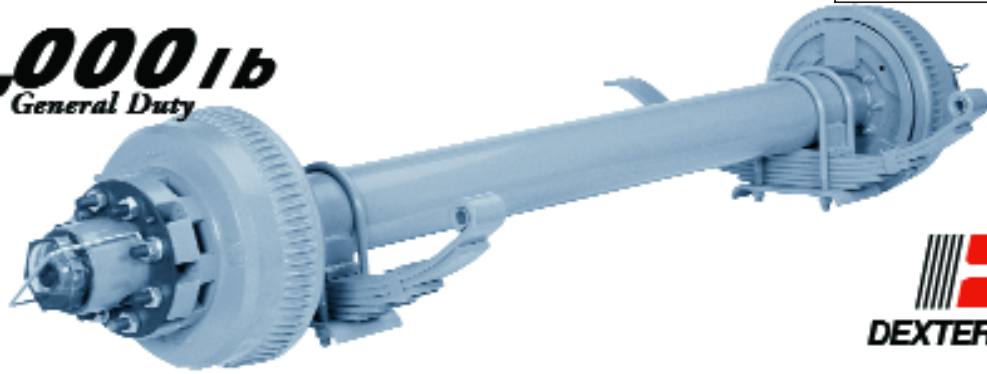
**Hanger and Attaching Parts Kits for 9,000 lb. (Sold Separately)**

Part No.	Ref. No.	Description
HAP-105-00	030420	9K SINGLE AXLE HANGER AND ATTACHING PARTS KIT
HAP-205-01	030440	9K MULTI-AXLE CONVERSION KIT FOR 38" AXLE SPACING
HAP205-02	030460	9K MULTI-AXLE CONVERSION KIT FOR 42 1/4" AXLE SPACING
HAP205-03	030480	9K MULTI-AXLE CONVERSION KIT FOR 48 1/2" AXLE SPACING

For information on selecting and ordering Tubular Axles, see pages A-2 thru A-3.

For specific ordering information, please call your nearest Branch.

**10,000 lb**  
General Duty



**SPECIFICATIONS**

**Suspension:**

Leaf Spring Suspension:

- Mounted 2 1/2" Wide Slipper Eye, Bronze Bushing
- Spring kit sold separately

Adjustable Spring Seat: For tracking alignment. (Optional)

Hanger Kit Options: See table below. (Sold Separately)

**Bolt Pattern Options:** • 8 on 6 1/2"

**Brake Options:** (Forward Self-Adjusting)

- 12 1/4" x 3 3/8" Electric
- 12 1/4" x 3 3/8" Hydraulic – Single or Duo-Servo, available with parking feature.
- ABS Equipped option for Hydraulic Brakes.

**Spindles:** Uses 387A Inner, 25580 Outer Bearing

- Straight

**Tubing:**

- 5" OD .250 wall

**Lubrication:**

- Oil Bath

**Wheel Assemblies:** See Section E

**10,000 lb GD Axle Assemblies**

**8 on 6 1/2"**

Electric w/o Springs	10GD865E-NOSPR
Duo Servo Hydraulic w/o Springs	10GD865HY-NOSPR

**ABS Equipped 8 on 6 1/2"**

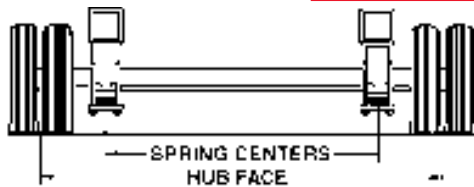
Electric w/o Springs	N/A
Duo Servo Hydraulic w/o Springs	10GD865HABSNSPR

**Replacement Parts:**

**Hub/Drums:** See Page B-29

**Brakes:** See Page C-16 (Electric),  
Page C-30 (Hydraulic)

**Axle Beams:** See Page B-2



**Standard Axle Configurations**

	Dual Wheel	Dual Wheel	Single Wheel
Track Width	74.00"	66.00"	84.00"
Spring Center - Max.	48.00"	40.00"	58.00"
Spring Center - Min.	43.00"	35.00"	53.00"

**NOTE:** Dimensions are based on manufacturing tolerances only. Some tire and wheel combinations may create interference.

**10,000 lb. General Duty Axle Options**

Part No.	Ref. No.	Description
10GDHYD-PARK	032410	HYDRAULIC BRAKES W/ PARK, ADD TO 10K GD HYDRAULIC BRAKE AXLE
XTRA-HF-10KGD	032425	EXTRA CHARGE (PER AXLE) FOR 10K GD AXLES OVER 80" HUB FACE
10GDADJ-SEAT	032430	ADJ SPG SEATS ALLOWS CORRECTION OF AXLE SPACING, PREVENTS SIDE TRACKING
72-77MT10GD	032601	2 EA, 72-77 SPRINGS MTD ON ABOVE 10K GD AXLES (7/8" SPRING EYE)

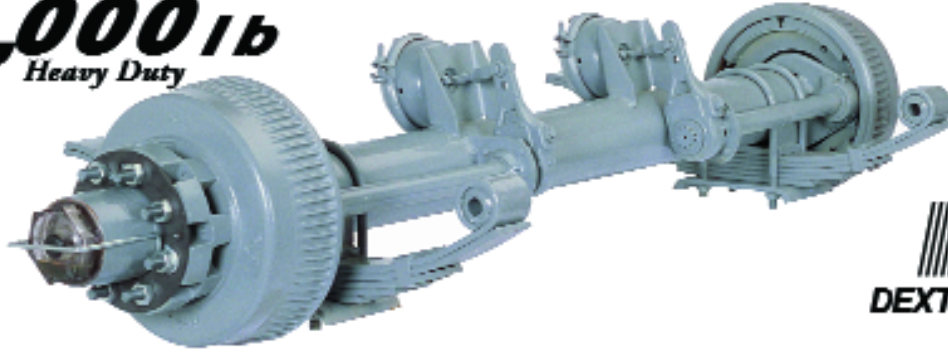
**Hanger and Attaching Parts Kits for 10,000 lb. General Duty (Sold Separately)**

Part No.	Ref. No.	Description
HAP-157-00	032701	10K GD SINGLE AXLE HANGER AND ATTACHING PARTS KIT, FOR 7/8" SPRING EYE
HAP-257-01	033101	10K GD MULTI-AXLE CONVERSION KIT FOR 38" AXLE SPACING, FOR 7/8" SPRING EYE
HAP257-02	033301	10K GD MULTI-AXLE CONVERSION KIT FOR 42 1/4" AXLE SPACING, FOR 7/8" SPRING EYE
HAP257-03	033501	10K GD MULTI-AXLE CONVERSION KIT FOR 48 1/2" AXLE SPACING, FOR 7/8" SPRING EYE

For information on selecting and ordering Tubular Axles, see pages A-2 thru A-3.

For specific ordering information, please call your nearest Branch.

**10,000 lb**  
Heavy Duty



**SPECIFICATIONS**

**Suspension:**

Leaf Spring Suspension:

- Mounted 3" Wide Slipper Eye, Rubber Bushing
- Spring kits sold separately

Adjustable Spring Seat: For tracking alignment (Optional)

Hanger Kit Options: (Sold Separately)

**Brake Options:**

- 12 1/4" x 4" Electric – Forward Self-Adjusting
- 12 1/4" x 4" Hydraulic – Forward Self-Adjusting, Single or Duo-Servo, available with parking feature
- Hydraulic Disc
- Air Brakes-  
Manual Slack Adjusters – Standard  
Automatic Slack Adjusters – Optional
- ABS Equipped option for Hyd, Disc, & Air Brakes

**Bolt Pattern Options:** • 8 on 6 1/2"

**Spindles:** Uses 395S Inner, 387A Outer Bearing

- Straight

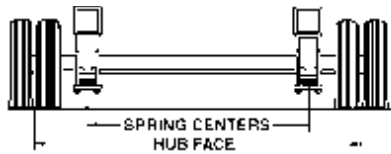
**Tubing:**

- 5" OD .250 wall • Optional .440" wall for use w/Air-Ride Suspension

**Lubrication:**

- Oil Bath

**Wheel Assemblies:** See Section E



NOTE: Dimensions are based on manufacturing tolerances only. Some tire and wheel combinations may create interference.

**10,000 lb. Heavy Duty Axle Assemblies**

**8 on 6 1/2"**

Electric w/o Springs	10K865E-NOSPR
Hydraulic w/o Springs	10K865HY-NOSPR
Hydraulic Disc w/o Springs	10K865DS-NOSPR
Air Brake w/o Springs	10K865A-NOSPR
Air Brake w/Park, no Springs	10K865ASB-NOSPR

**ABS Equipped 8 on 6 1/2"**

Electric w/o Springs	N/A
Hydraulic w/o Springs	10K865HABSNSPR
Hydraulic Disc w/o Springs	10K865DABSNSPR
Air Brake w/o Springs	10K8A-ABSNSPR
Air Brake w/Park, no Springs	10K8APABSNSPR

**Replacement Parts:**

**Hub/Rotor:** See Page B-30

**Hub/Drums:** See Page B-29

**Brakes:** See Page C-18 (Electric), Page C-31 (Hydraulic)

See Page C-33 (Disc), Page C-34 (Air)

**Axle Beams:** See Page B-2

**Standard Axle Configurations:**

	Dual Wheel	Dual Wheel	Single Wheel
Track Width	74.00"	66.00"	84.00"
Spring Center - Max.	48.00"	40.00"	58.00"
Spring Center - Min.	43.00"	35.00"	53.00"

**10K Heavy Duty Axle Options**

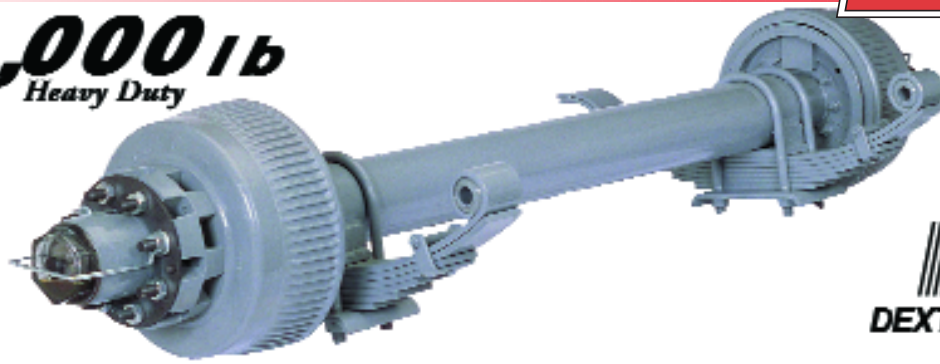
Part No.	Ref. No.	Type
ADD-10KHD-WALL	035250	ADD PER AXLE FOR .44 HVY WALL TUBING (REQUIRED FOR AIR RIDE SUSPENSION)
10KHYD-PARK	03540	HYDRAULIC BRAKES W/PARK ADD TO 10K HEAVY-DUTY AXLES
XTRA-HF-10K	035425	EXTRA CHARGE PER AXLE FOR 10K HEAVY-DUTY AXLES WITH OVER 80" HUB FACE
10KADJ-SEAT	035450	ADJ SPG SEATS ALLOWS CORRECTION OF AXLE SPACING, PREVENTS SIDE TRACKING
ADD-AUTOSL	043125	ADD PER AXLE FOR AUTOMATIC SLACK ADJUSTERS (AIR BRAKE)
72-43-1MT10K	040700	2 EA, 72-43-1 SPRINGS MTD ON ABOVE 10K AXLES

See Pages D-11 for Available Hanger and Attaching Parts Kits for 10,000 lb. Heavy Duty axles.

For information on selecting and ordering Tubular Axles, see pages A-2 thru A-3.

For specific ordering information, please call your nearest Branch.

**12,000 lb**  
Heavy Duty



AXLE  
ASSEMBLIES



**SPECIFICATIONS**

**Suspension:**

Leaf Spring Suspension:

- Mounted 3" Wide Slipper Eye, Rubber Bushing
- Spring kits sold separately

Adjustable Spring Seat: For tracking alignment. (Optional)

Hanger Kit options – (sold separately)

**Brake Options:**

- 12 1/4" x 5" Electric – Forward Self-Adjusting
- 12 1/4" x 5" Hydraulic – Forward Self-Adjusting, Single or Duo-Servo, available with parking feature
- Hydraulic Disc
- Air Brakes- Manual Slack Adjusters – Standard Automatic Slack Adjusters – Optional
- ABS Equipped option for Hyd, Disc, & Air Brake

**Bolt Pattern Options:** • 8 on 6 1/2"

Standard: Hi Profile Hub for 16", 16.5" dia. wheels;  
Optional: Low Profile for 14.5" wheels.

**Spindles:** Uses 3984 Inner, 28682 Outer Bearing  
• Straight

**Tubing:**

- 5" OD .440 wall

**Lubrication:**

- Oil Bath

**Wheel Assemblies:** See Section E

**12,000 lb Heavy Duty Axle Assemblies**

**8 on 6 1/2"**

Electric w/o springs	12K865E-NOSPR	12K865LPE-NOSPR
Hydraulic Disc w/o Springs	12K865DS-NOSPR	N/A
Duo-Servo Hydraulic w/o Springs	12K865HY-NOSPR	12K865LPHYNSPR
Air Brake w/o Springs	12K865A-NOSPR	12K865LPANSPR
Air Brake w/Park & w/o Springs	12K865ASB-NOSPR	12K865LPASB-NOSPR

**ABS Equipped 8 on 6 1/2"**

Electric w/o springs	N/A	N/A
Hydraulic Disc w/o Springs	12K865DABSNSPR	N/A
Duo-Servo Hydraulic w/o Springs	12K865HABSNSPR	12K865LPHABSNSPR
Air Brake w/o Springs	12K865A-ABSNSPR	12K865ALPABSNSPR
Air Brake w/Park & w/o Springs	12K865APABSNSPR	12K865ALPAPABSNSPR

**Replacement Parts:**

**Hub/Rotor:** See Page B-31

**Hub/Drums:** See Page B-31

**Brakes:** See Page C-19 (Electric), Page C-32 (Hydraulic), Page C-33 (Disc), Page C-34 (Air)



**Standard Dual Wheel Axle Configurations**

	Low Profile		High Profile	
Track Width	74.50"	70.50"	74.00"	66.00"
Spring Center - Max.	41.00"	37.00"	47.50"	39.50"
Spring Center - Min.	33.50"	29.50"	33.00"	25.00"

**NOTE:** Dimensions are based on manufacturing tolerances only. Some tire and wheel combinations may create interference.

**12K Heavy Duty Axle Options**

Part No.	Ref. No.	Type
12KHYPARK	037200	HYDRAULIC BRAKES W/ PARK ADD TO 12K HEAVY-DUTY AXLES
XTRA-HF-12K	037225	EXTRA CHARGE (PER AXLE) FOR 12K HEAVY-DUTY AXLES OVER 80" HUB FACE
12KADJ-SEAT	037250	ADJ SEATS ALLOWS CORRECTION OF AXLE SPACING, PREVENTS SIDE TRACKING
ADD-AUTOSL	043125	ADD PER AXLE FOR AUTOMATIC SLACK ADJUSTERS (AIR BRAKES)
72-44-1MT12K	040740	2 EA, 72-44-1 SPRINGS MTD ON ABOVE 12K AXLES

See Pages D-11 for Available Hanger and Attaching Parts Kits for 12,000 lb. Heavy Duty axles.

For information on selecting and ordering Tubular Axles, see pages A-2 thru A-3.

For specific ordering information, please call your nearest Branch.

**15,000 lb**  
Heavy Duty



**SPECIFICATIONS**

**Suspension:**

Leaf Spring Suspension:

- Mounted 3" wide Slipper Eye, Rubber Bushing
- Spring kit sold separately

Adjustable Spring Seat: For tracking alignment. (Optional)

Hanger Kit options – (sold separately)

**Brake Options:**

- 12 1/4" x 5" Electric – Forward Self-Adjusting
- 12 1/4" x 5" Hydraulic – Forward Self-Adjusting, Single or Duo-Servo, available with parking feature
- Air Brakes-  
Manual Slack Adjusters – Standard  
Automatic Slack Adjusters – Optional
- ABS equipped option for Hyd and Air Brakes

**Bolt Pattern Options:** • 8 on 275mm Hub-Piloted

**Spindles:** Uses 3984 Inner, 28682 Outer Bearing

- Straight

**Tubing:** • 5" OD .440 wall

**Lubrication:** • Oil Bath

**Wheel Assemblies:** See Section E

**15,000 lb. Heavy Duty Axle Assemblies  
8 on 275mm**

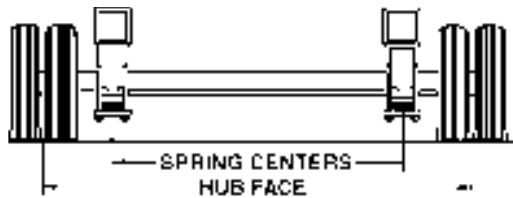
Electric w/o Springs	15K8E-NOSPR
Duo-Servo Hydraulic w/o Springs	15K8HY-NOSPR
Air Brake w/o Springs	15K8A-NOSPR
Air Brake w/Spring Brakes w/o Springs	15K8ASB-NOSPR

**ABS Equipped 8 on 275mm**

Electric w/o Springs	N/A
Duo-Servo Hydraulic w/o Springs	15K8HABS-NOSPR
Air Brake w/o Springs	15K8AABS-NOSPR
Air Brake w/Spring Brakes w/o Springs	15K8APABSNSPR

**Replacement Parts:**

**Hub/Drums:** See Page B-32  
**Brakes:** See Page C-19 (Electric),  
 Page C-32 (Hydraulic), Page C-40 (Air)



NOTE: Dimensions are based on manufacturing tolerances only. Some tire and wheel combinations may create interference.

**Standard Axle Configurations**

	Dual Wheel	Dual Wheel
Track Width	75.00"	67.00"
Overall Width	96.00"	88.00"
Spring Center - Max.	46.00"	38.00"
Spring Center - Min.	42.00"	34.00"

**15K Heavy Duty Axle Options**

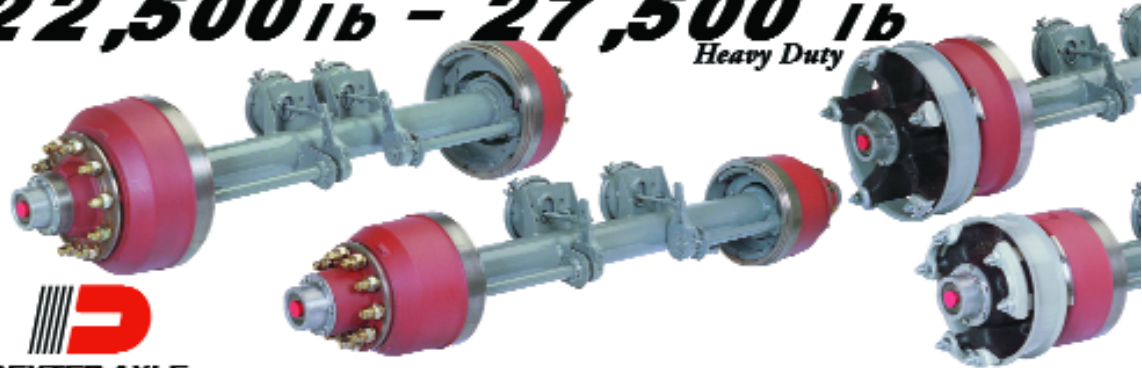
Part No.	Ref No.	Type
15KHYD-PARK	040600	HYD BRAKES W/ PARK, ADD TO 15K HYD BRAKE AXLE PRICE
XTRA-HF-15K	040610	EXTRA CHARGE (PER AXLE) FOR 15K AXLES OVER 80" HUB FACE
15KADJ-SEAT	040615	ADJ SPG SEATS ALLOWS CORRECTION OF AXLE SPACING, PREVENTS SIDE TRACKING
ADD-AUTOSL	043125	ADD PER AXLE FOR AUTOMATIC SLACK ADJUSTERS (AIR BRAKE)
72-45-1MT15K	040770	2 EA, 72-45-1 SPRINGS MTD ON ABOVE 15K AXLES

See Pages D-11 for Available Hanger and Attaching Parts Kits for 15,000 lb. Heavy Duty axles.

For information on selecting and ordering Tubular Axles, see pages A-2 thru A-3.

For specific ordering information, please call your nearest Branch.

# 22,500 lb - 27,500 lb Heavy Duty



AXLE  
ASSEMBLIES

## SPECIFICATIONS

**Suspensions:** See pages D-19 and D-20 for listing.

**Bolt Pattern Options:** • 3 Spoke Cast • 5 Spoke Cast  
• 10 on 8 3/4" • 10 on 11 1/4"

**Brake Options:** • 12 1/4" x 7 1/2" "S" Cam Air Brakes  
• 16 1/2" x 7" "S" Cam Air Brakes  
• Spring Brakes\* &/or ABS Equipped\* Axles available upon request

**Cam Shaft:** Various lengths are available upon request.\*

**Slack Adjusters:** Slack adjusters are available in Manual, Automatic\* and/or Curved\* models.

**Spindles:** HM218248 Inner, HM212049 Outer Bearing

**Air Chambers:** Type 30 Service Chamber Standard

**Spring Brakes:** Available upon request

**Seals:** Unitized National or Stemco\* Seals

\* Indicates those parts which are optional features and an additional charge from the standard models.

**Track:** Standard Tracks are 71 1/2" and 77 1/2"\*  
(\*special tracks available upon request)

Note: Axle tracks under 71" may be subject to clearance problems when used w/ air-ride suspensions

**Tubing/Beam Capacity:** 5" OD .50" wall (22,500lb),  
.62" (25,000 lb), .75" (27,500 lb),  
Capacities reduced in off-road and/or Air-Ride suspension applications. A minimum of .62" wall thickness required for Air-Ride Suspensions

**Spring Centers:**

Maximum: Track minus 32 1/2" or as tire clearance allows.

Minimum: Track minus 34 1/2"

### Replacement Parts:

**Brakes:** See Page C-40 (Air)

## Heavy Duty Axle Assemblies

Axle Type	.50" Nominal Wall Thickness	.62" Nominal Wall Thickness	.75" Nominal Wall Thickness
<b>12 1/4" x 7 1/2" Brake</b>			
Less Hub and Drum	D200-5-LHD12	D200-6-LHD12	D200-7-LHD12
3 Spoke Cast Hub & Drum for 15" & 17.5" Rims	D200-5-3SPK12	D200-6-3SPK12	D200-7-3SPK12
3 Spoke Cast Hub & Drum for 15" & 17.5" Rims, w/ ABS Sensors & Tone Rings	D200-5-3SP12ABS	D200-6-3SP12ABS	D200-7-3SP12ABS
10 on 8 3/4" Bolt Circle Hub and Drum	D200-5-10-12	D200-6-10-12	D200-7-10-12
10 on 8 3/4" Bolt Circle Hub and Drum, w/ ABS Sensor & Tone Rings	D200-5-10-12ABS	D200-6-10-12ABS	D200-7-10-12ABS
<b>16 1/2" x 7" Brake</b>			
Less Hub and Drum	D200-5-LHD16	D200-6-LHD16	D200-7-LHD16
5 Spoke Cast Hub and Drum, for 20" & 22.5" Rims	D200-5-5SPK16	D200-6-5SPK16	D200-7-5SPK16
5 Spoke Cast Hub and Drum, for 20" & 22.5" Rim, w/ ABS Sensor and Tone Rings	D200-5-5SP16ABS	D200-6-5SP16ABS	D200-7-5SP16ABS
10 on 11 1/4" Bolt Circle Hub & Drum	D200-5-10-16	D200-6-10-16	D200-7-10-16
10 on 11 1/4" Bolt Circle Hub and Outboard Drum	D200-5-10-16OB	D200-6-10-16OB	D200-7-10-16OB
10 on 11 1/4" Bolt Circle Hub and Outboard Drum, w/ ABS Sensor and Tone Rings	D200-5-10-16ABS	D200-6-10-16ABS	D200-7-10-16ABS

## Axle Options

Part No.	Ref. No.	Type
XTRA-HF-20K	042070	EXTRA CHARGE (PER AXLE) FOR AXLES W/TRACK 71.6" THRU 77.5"
XTRAWD-HF-20K	042072	EXTRA CHARGE (PER AXLE) FOR AXLES W/TRACK 77.6" THRU 92.5"
SUPRWD-HF-20K	042100	EXTRA CHARGE (PER AXLE) FOR AXLES W/TRACK 92.6" & OVER
ADD-STEMCO	043075	ADD PER AXLE FOR STEMCO GRIT GUARD SEALS
ADD-3030SB	043100	ADD PER AXLE FOR TYPE 30-30 SPRING BRAKE CHAMBERS
ADD-AUTOSL	043125	ADD PER AXLE FOR AUTOMATIC SLACK ADJUSTERS (AIR BRAKE)
D200-16-ADD-HPS	042066	HUB PILOTED OPTION, (STEEL WHEEL) ADD-ON TO 10-11.25 OUTBOARD DRUM

For information on selecting and ordering Tubular Axles, see pages A-2 thru A-3. For specific ordering information, please call your nearest Branch.